

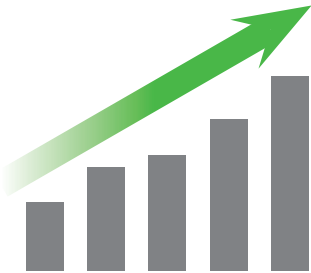


Mistral+
A breath
of fresh air.

AZKOYEN®

Developed with one aim: to increase your profitability

The outstanding feature of the Mistral+ series is its incredible flexibility making it capable of adapting to all types of products, locations and the changes that take place during the evolution of your business.



Increase your impulse sales.

An elegant design to attract consumers and outstanding product visibility to increase sales.

- **Optimised LED lighting** to improve visibility.
- **Transparent sections** for improved presentation.
- **Alternative download** to prevent empty channels.

It grows at the rate of your company.

Its modular system means **the battery can adapt to the volume of demand** from consumers. You can combine up to **3 vending machine modules** connected to one payment module or an Azkoyen hot beverage vending machine*.



Your full range fits in one Mistral+.

It has been designed **to sell all types of products**, with or without refrigeration, fragile and delicate, on a small and **large scale**.

- Maximum product capacity.
- **5 configurable trays** and **1 tray adjustable** in steps.
- Large format removal by 2 simultaneous motors.
- Capacity for 600 and 750 cc bottles.
- **Wide collection tray**.
- Optional product retrieval **lift**.



Food safety guaranteed.

Designed to meet the strictest health regulations, it has a straightforward temperature and expiry control system that prevents the sale of products in poor condition.

- Refrigeration up to **3°C**.
- **Sanitary temperature control** system by tray.
- **Allocation of expiry dates** by selection.
- Control system to prevent **sales to under-age children**.



The key is in minimizing operating costs.

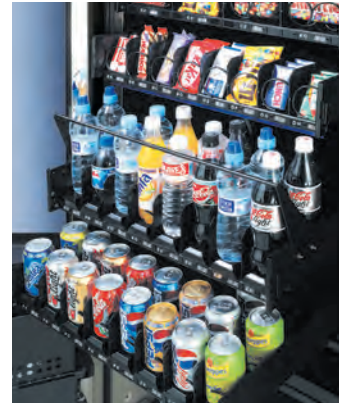
Each detail in the Mistral+ series has been developed to make it more ergonomic, easy to use, reliable and safe. All for one purpose: to improve the profitability of your business.



Faster and safer product loading.

Making the operator's work easier and faster is an investment in profitability. For this reason the interior has been designed to increase the ergonomics of stocking products.

- **Trays can be extracted with the door open at 90°.**
- **Folding** upper trays.
- Trays with **no sharp edges or points.**
- Access to all parts **from front.**
- Modules designed for **70 cm doors.**



Easier and faster to configure.

The new control system **with USB port** caters for **firmware updates, copying and downloading machine configurations** and downloading EVA-DTS **telemetry protocols** with a simple **USB mass storage device.**



Minimizes expenses related to vandalism.

The Mistral+ series incorporates the **latest technology and safety accessories** so no act of vandalism will affect your profit.

- I-Detect **product exit detection** system.
- **Automatic closing** of product retrieval zone.
- **6 anchoring points** in the payment module.
- Recessed doors and **double toughened glass front.**
- Optional **anti-vandalism** payment module.
- Optional **cash box security.**



3R



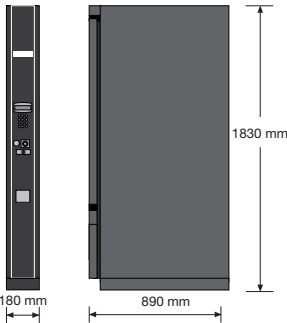
Environmentally friendly.

Mistral+ has been developed under the **3R rule: Reduce, reuse, recycle.**

- We have **reduced energy consumption** with the incorporation of a LED lighting system, automatic closing of the retrieval zone and improved insulation.
- Designed to **lengthen its useful life** due to its robustness.
- Made according to **RoHS** and **WEEE** European directives.



TECHNICAL SPECIFICATIONS

	Mistral+ H85	Mistral+ H70	Payment module
Capacity Configuration	Shelves per unit: Maximum of 8 Channels per shelf: Maximum of 10 Maximum No. of Selections: 80	Shelves per unit: Maximum of 8 Channels per shelf: Maximum of 8 Maximum No. of Selections: 64	
Recommended Product Capacity Configuration	No. of trays: 5 + 1 adjustable No. of selections: 48 Capacity: 445 units Snacks: 285 units Sandwiches: 40 units Cans/bottles: 120 units	No. of trays: 5 + 1 adjustable No. of selections: 38 Capacity: 370 units Snacks: 244 units Sandwiches: 30 units Cans/bottles: 96 units	
Programming, connectivity and communications	EXE/MDB protocol. Standard USB connectivity. Standard EVA-DTS communications.		Change-giver: EXE / MDB Banknote-reader: MDB Cashless system: MDB
Sensors	I-Detect Sensor Electronic product exit detection that guarantees the product is removed correctly. This gives the consumer a sense of trust and safety, reducing the level of vandalism.		
Dimensions and weight	Height: 1830 mm Width: 850 mm Length: 890 mm Weight: 265-336 kg 	Height: 1830 mm Width: 710 mm Length: 890 mm Weight: 234-305 kg 	Height: 1830 mm Width: 180 mm Length: 890 mm Weight: 86 kg 
Energy	Voltage: 230 V/50 Hz Maximum power: 520 W		Voltage: 230 V/50 Hz Maximum power: 96 W

Configuration accessories

**2 temperature kit**

This system means two different temperatures can be set inside the machine to provide very cold drinks (3° C) and also snacks at a suitable temperature (12°C).

**Lift**

System that softens product removal and prevents the product from dropping from the channel to the retrieval tray. Ideal for removing fragile or delicate products.

**Novara connection kit**

Kit with an alphanumeric keypad that means a Mistral+ slave machine can be controlled from an Azkoyen Novara hot beverage vending machine.

**Adjustable Tray**

Adjustable trays provide greater flexibility when configuring channels and help them adapt to the different sizes of products.

**Digital prices**

Easily adjustable price displays that allow operators to change prices in real-time, display additional product information and identify promotions. Customise the backlight of each display for additional impact.

**Capacitive keyboard**

Back lit capacitive technology with screen effect.

Security

**Cash Box security**

This system prevents the cash box from being removed from the machine without the correct key.

**Anchorage to ground kit**

This system immobilizes the machine by anchoring it to the ground in two or four places, guaranteeing security against vandalism or attempts at theft.

**Anti-vandalism payment module.**

Includes anti-vandalism coin entry and exit system. Prevents fraud and deliberate breakdown.

Payment methods

**Banknote reader**

A kit which allows a standard MDB banknote reader to be fitted.

**Cashless systems**

A kit which allows an EXE or MDB cashless payment system to be fitted onto the machine.

Amazingly flexible and adaptable.



Mistral+ H70 and Payment module



Mistral+ H85 and Payment module



Mistral+ H85, Payment module and Mistral+ H85



Mistral+ H70 and Zensia



Mistral+ H70 and Novara



Mistral+ H70, Novara and Mistral+ H70

U.K.
Unit 1, Portishead Business Park
Old Mill Road, Portishead
Bristol, BS20 7BX
Tel.: 01275 844 471

España
Avda. San Silvestre, s/n
31350 Peralta (Navarra)
Tel.: 948 709 709*

Deutschland
Am Turm 86
53721 Siegburg
Tel.: 02241- 595 70

France
7 Allée de Londres
Le Madras Bat C2
91140 Villejust
Tel.: 01 69 75 42 10

Portugal
Bela Vista Office
Estrada de Paço
de Arcos, 66
2735-336 Cacem
Tel.: 1210 985 212

Colombia
Via la Virginia, Corregimiento
Caimalito. Bodega B-16.
Zona Franca Internacional
Pereira
Tel.: +57 6 3110513

United States
3809H Beam Road
Charlotte
NC 28217
Tel.: (803) 524-1008

Vending Systems Division



vending@azkoyen.com
www.azkoyenvending.com

AZKOYEN.

